



MANUAL VERTICAL MOVEMENT

Cutting force can be regulated precisely and with little effort by using the wheel spider. The wheel height can be locked at each point of the wheel spider rotation.

MANUAL HORIZONTAL MOVEMENT

The manual horizontal movement allows cutting long parts longitudinally.

The universal wet abrasive cut off machine BRILLANT 255 with manual travel and fine dynamic cutting allows precise, soft touch cutting with 2 axes in arbitrary directions (Y/X axis) and can be equipped with a manual Z-axis for parallel serial cuts (option). Side openings allow cutting continuous long parts in the spacious cutting chamber of this solid and powder-coated aluminium construction.

BRILLANT 255

Complex geometric shaped samples can be fixed securely on the T-slot table using our reliable clamping systems.

The vibration reducing design of the cutting arm allows a low noise cutting process.

Our approved LED cutting chamber illumination is energy saving, damage resistant and guarantees optimum illumination of the cutting chamber.



MANUAL CROSS FEED

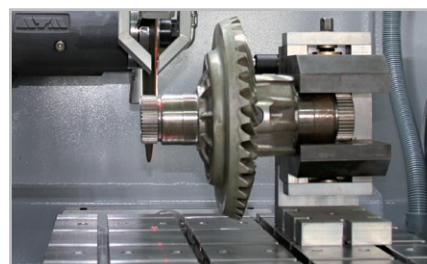
The Z-axis is integrated in the table, and a measured parallel slice can be set using the hand wheel with scale. The height of the cutting wheel does not need to be altered when setting the Z-axis dimension.

SAFETY

Integrated safety protection only allows the automatic doors to be opened when the cutting wheel has stopped rotating.

LASER ALIGNMENT

With line laser you can display the scheduled cut on the sample. This helps to define the exact cutting position.



BASIC MODULE



BRILLANT 255



Order No.: M1841001

- » manual horizontal movement with handle
- » manual, fine dynamic cut-off with lateral wheel spider
- » automatic touch detection
- » spacious cutting chamber with large T-slot table
- » openings on the left and right for continuous long parts
- » sliding door
- » current safety standard with door interlock (safety protection)
- » cutting wheel arbour with wear ring
- » optimum cutting chamber illumination with LED
- » solid aluminium construction, powder coated
- » Easy-nut for quick and easy exchange of cutting wheels



EQUIPMENT

POWER SUPPLY



Equipment 1
Fixed speed 1950 rpm

400 V/50 Hz (3Ph/N/PE)

Order No.: A1841020

Equipment 2
Fixed speed 1950 rpm

480 V/60 Hz (3Ph/PE)

Order No.: A1841021

Equipment 3
Fixed speed 1950 rpm

220 V/60 Hz (3Ph/PE)

Order No.: A1841022

TISCHANTRIEB



Equipment 1
Without Z-axis
Order No.: A1841023
» made of stainless steel

Equipment 2
Z-axis m manual (handle)
Order No.: A1841024
» made of stainless steel

Travel Z-axis 150 mm

Precision 0.1 mm

WHEEL GUARD



Equipment 1
Cut-off wheel Ø 350 mm/14"
Order No.: A1841009

Max. cutting capacity Ø 130 mm

Equipment 2
Cut-off wheel Ø 400 mm/16"
Order No.: A1841010

Max. cutting capacity Ø 150 mm



EQUIPMENT

COOLING AND FILTER SYSTEMS



Equipment 1

Recirculation cooling systems

400 V/50 Hz (3Ph/PE)

Order No.: A1841011

480 V/60 Hz (3Ph/PE)

Order No.: A1841012

220 V/60 Hz (3Ph/PE)

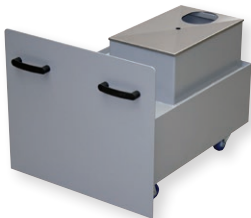
Order No.: A1841013

Tank approx. 130 ltr.

Pump approx. 100 ltr./min

WxHxD 755x663x921 mm

» integrated

» inlet sieve with filter bag
(see consumables)

Equipment 2

Belt filter system 285

400 V/50 Hz (3Ph/PE)

Order No.: A6501000

480 V/60 Hz (3Ph/PE)

Order No.: A6501002

220 V/60 Hz (3Ph/PE)

Order No.: A6501001

Tank 285 ltr.

Filtering capacity 100 ltr./min
(referring emulsion)

Pump 100 ltr./min

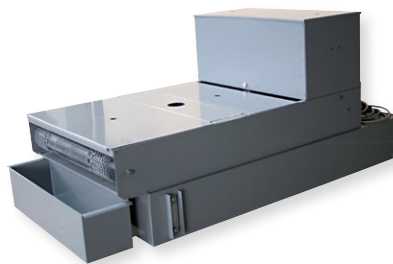
Filter area 0.85 m²

Filter fleece width 710 mm

WxHxD 929x790x1745 mm

Weight approx. 120 kg

» incl. filter roll



Connection set 255/265

Order No.: Z6501003

» for belt filter system please order
connection set

OPTION

CENTRIFUGAL SEPARATOR



» to remove coolant mist

» increases quality of illumination

» exhauster power 425 or 500 m³/h depends on power supply

400 V/50 Hz (3Ph/PE)

Order No.: A1841029

480 V/60 Hz (3Ph/PE)

Order No.: A1841030

220 V/60 Hz (3Ph/PE)

Order No.: A1841031



LASER ALIGNMENT AID



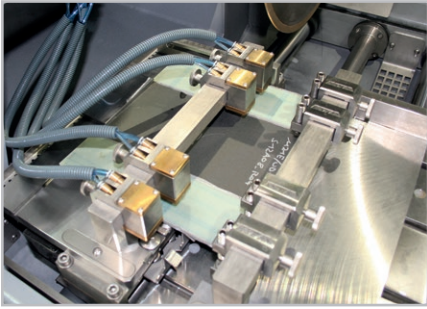
Order No.: A1841032

» laser line to visualize the cutting line

» laser class 1M DIN EN 60825-1



OPTION

**PULSED CLAMPING SYSTEM FOR BRILLANT 255/265**

- » parallel, continuous serial cuts of 5–130 mm width
- » clamping and adjusting of sheet material up to 20 mm thickness in Z-direction
- » max. material width (cutting length) 300 mm with cut-off wheel \varnothing 350 mm

manual

Order No.: Z1841010

- » for manual Z-axis

SPECIFICATIONS

Max. cutting capacity	\varnothing 150 mm (depends on cut-off wheel)	
Cut-off wheel	1	\varnothing 356/15" mm
	2	\varnothing 406/16" mm
Arbour size	\varnothing 32 mm	
Vertical movement	170 mm (depends on cut-off wheel)	

Motor cut-off wheel	7 kW, S1-mode	
Connected load	12.5 kVA	
Power supply	fixed speed 1950 rpm	
	1	400 V/50 Hz (3Ph/N/PE)
	2	480 V/60 Hz (3Ph/PE)
	3	220 V/60 Hz (3Ph/PE)

Horizontal movement	365 mm	
Table WxD	1	550x375 mm (without Z-axis)
	2	420x375 mm (with Z-axis)
T-slot	12 mm	

WxD approx.	1100x1600x930 mm	
Weight approx.	450 kg (depends on equipment)	

